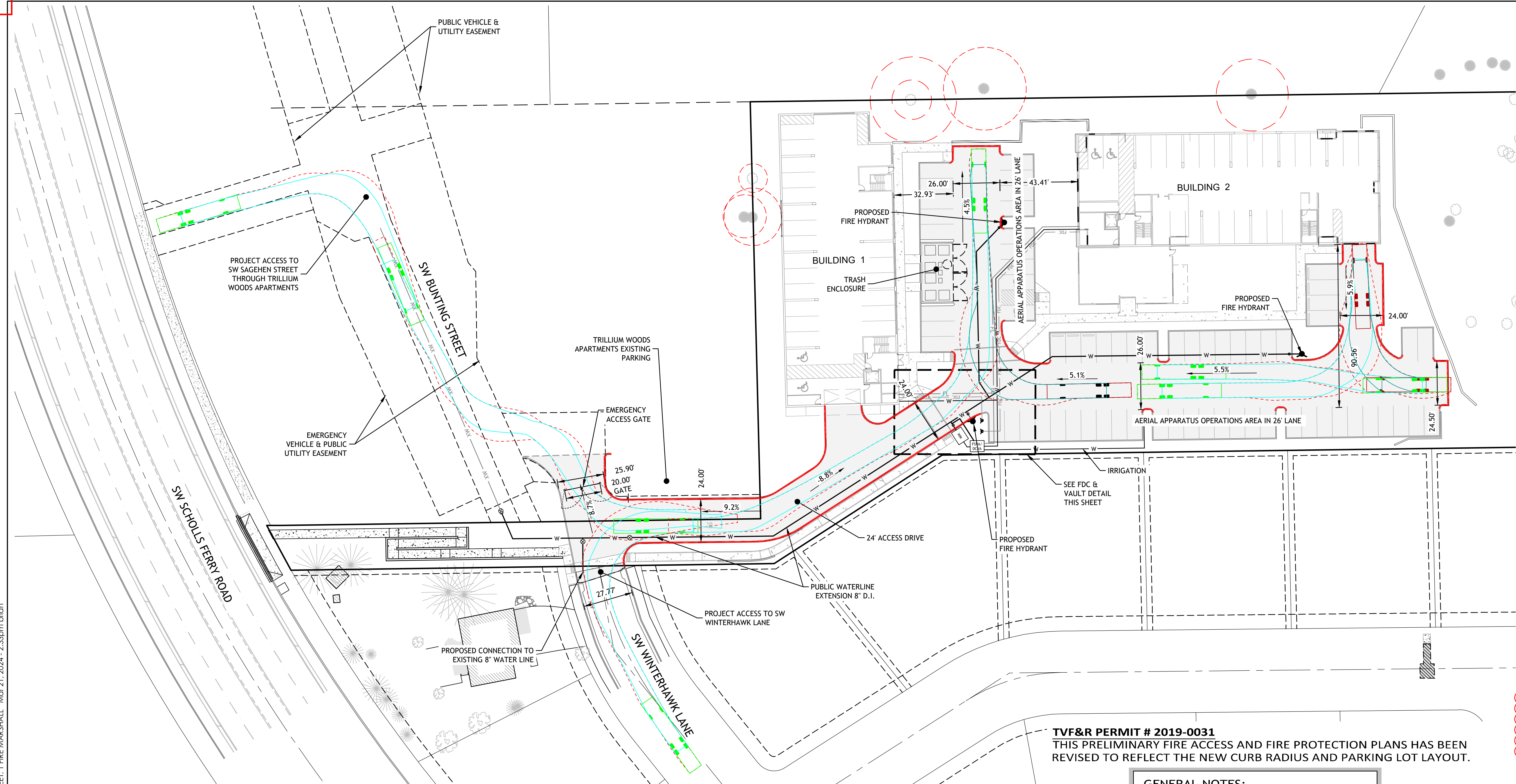


REVISIONS		
NO.	DATE	DESCRIPTION



**SCHOLLS  
FERRY  
MULTIFAMILY**



APPROVED PLANS  
APPROVAL OF PLANS IS NOT AN APPROVAL  
OF OMISSIONS OR OVERSIGHTS.  
Jeremy Foster  
Deputy Fire Marshal II

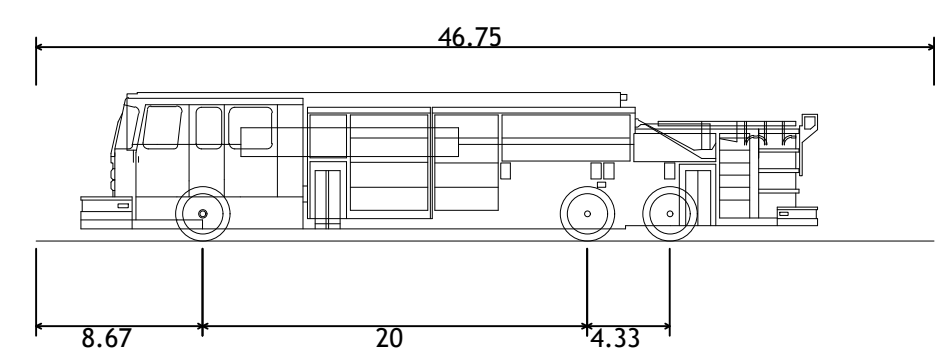
**TVF&R Permit # 2022-0031**  
Minor site revisions  
4/3/2024.

**TVF&R PERMIT # 2019-0031**  
THIS PRELIMINARY FIRE ACCESS AND FIRE PROTECTION PLANS HAS BEEN  
REVISED TO REFLECT THE NEW CURB RADIUS AND PARKING LOT LAYOUT.

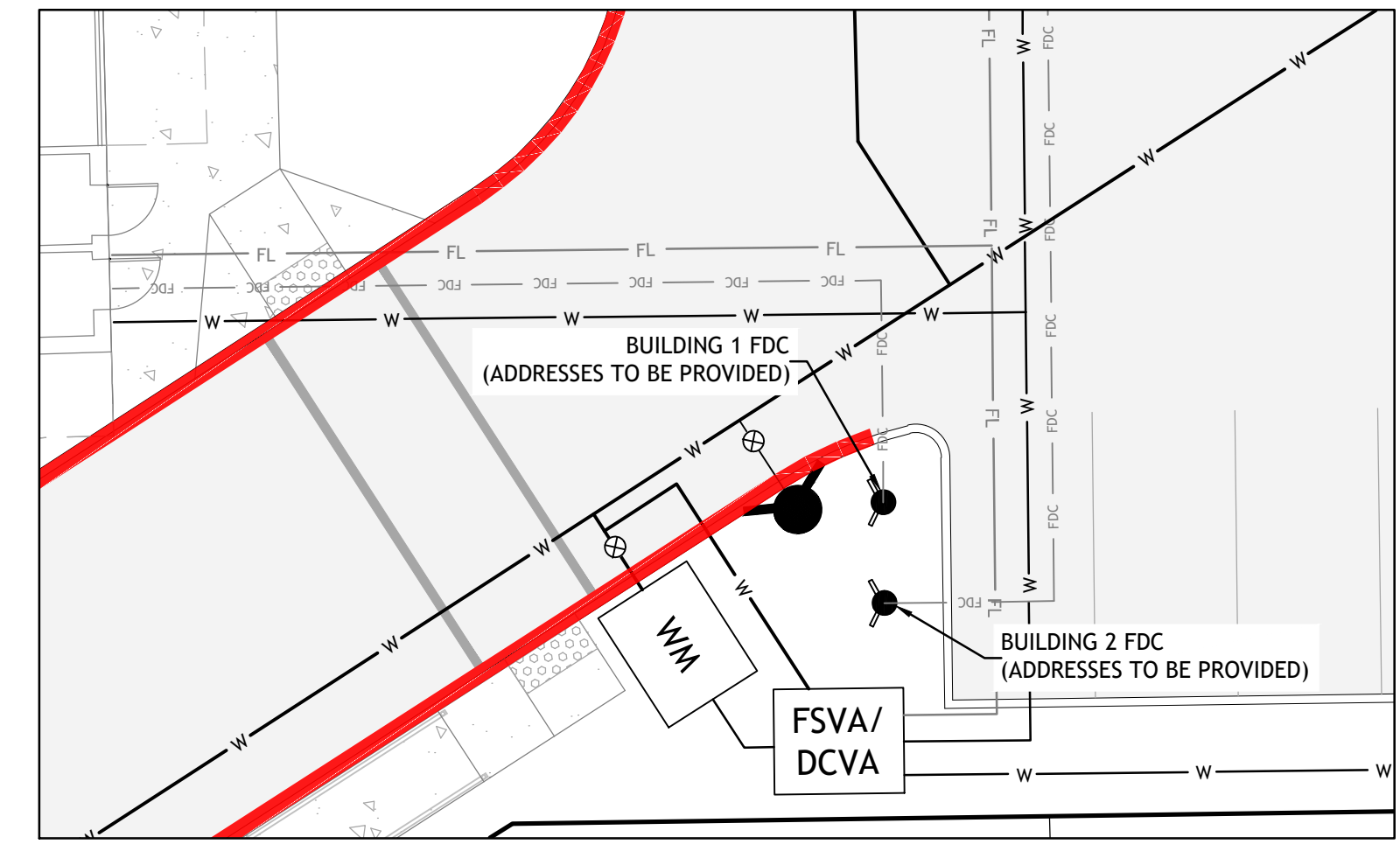
- GENERAL NOTES:**
- BUILDINGS TO REQUIRE NFPA 13 FIRE SPRINKLER SYSTEM
  - GROSS BUILDING AREA  
BUILDING 1 = 39,324  
BUILDING 2 = 41,656  
(2-5 STORY BUILDINGS)  
(BUILDING AREAS DO NOT INCLUDE GARAGE AREA)
  - ALL FIRE LANES TO SUPPORT 75,000 LBS GROSS VEHICLE WEIGHT & 12,500 LBS WHEEL LOAD WITH ALL WEATHER DRIVING SURFACE.
  - POST "NO PARKING, FIRE LANE" AT 25' INTERVALS ALONG FIRE LANES
  - EMERGENCY ACCESS GATE TO BE INSTALLED AT SW BUNTING STREET. GATE SHALL HAVE A MINIMUM CLEARANCE OF 20' WHEN FULLY OPENED AND BE INSTALLED WITH A KNOX EMERGENCY ACCESS LOCK BOX.

**LEGEND**

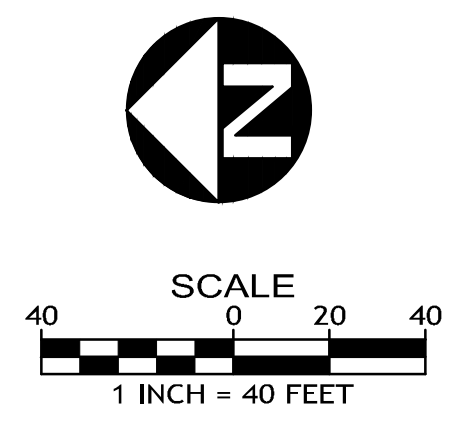
	EXISTING RIGHT-OF-WAY
	PROPOSED CURB AND GUTTER
	EXISTING PROPERTY LINE
	EXISTING BOUNDARY LINE
	"NO PARKING" STRIPING
	FIRE TRUCK WHEEL PATH (FORWARD/REVERSE)
	FIRE TRUCK BODY PATH (FORWARD/REVERSE)
	FIRE TRUCK (FORWARD/REVERSE)



TVFR  
Overall Length 46.750ft  
Overall Width 8.000ft  
Overall Body Height 7.715ft  
Min Body Ground Clearance 0.627ft  
Track Width 8.000ft  
Lock-to-lock time 6.00s  
Max Wheel Angle 40.00°



**FDC & VAULT DETAIL**  
HORIZ SCALE: 1" = 10'



**PRELIMINARY  
FIRE ACCESS  
&  
FIRE PROTECTION  
PLAN**

PROJECT NO.: 136007  
TYPE: PRELIMINARY  
REVIEWED BY: JH

**FS-1**